

The newsletter for portable antiquities and finds in Kent.

In this issue:

- Welcome!
- Lockdown updates on finds and treasure.
- Finds of lockdown
- Surgeries and clubs in the future
- Recording finds with the FLO via email.
- Photographing finds for the FLO with Emma Peirce

Welcome!

finders, find specialists and everyone else interested in the archaeological finds of Kent. We're back! And in this issue we find out what the FLO has been up to during lockdown, have a look at some of the great recently recorded finds and some which have been recently updated. We also have a great guide on photographing your finds when you want to send images to the FLO. As well as important information on future recording.

- Editor: Jo Ahmet, Finds Liaison Officer for Kent.

Finds Update:

Since lockdown began the FLO has not been able to get to the office or access the finds left to be recorded. Fear not however he was allowed back to check everything was secure and grab some books for remote recording.

Over the next few months the FLO will be allowed to collect material from the office but not work there until around September. This means the deposited finds are being processed again. The FLO will contact each finder to ask permission prior to recording as the material is recorded from home.

Finds will begin to be returned in Maidstone hopefully in August, though the venue is not yet clear. The FLO will email appointment slots once finds are ready to return.

If you have new finds that need recording and/or identified we have a helpful guide later in this issue on what info the FLO



KENT-22584C - A copper-alloy Iron age bronze unit of the Cantiacii issued in the name of Epillus. 'Epillus Bull and Eagle' type dating to the period c. AD 1-15.

This coin is a fantastic example of how coins provide snapshots of the past. We see a motif commonly used on roman coins, the eagle shown alongside the bull motif popular since the 2nd century BC on Kentish coins. It also names a king who begins his reign as king of the Atrebatas tribe from further west in Britain. Perhaps this hints at political changes with this king taking over in Kent?

Recorded from North-East Kent Via Images provided by the finder.

Treasure Update: Treasure continues to be processed via email and treasure forms. Most finders will need to hold onto their treasure until the end of autumn when the FLO gets regular access to the safe again.

For current treasure cases the FLO has been clearing curatorial reports on treasure cases and submitting them to the British Museum. By the time regular service resumes in the last quarter of the year all these reports will be cleared including most from the first half of 2020.

The curatorial staff at the British Museum are mostly furloughed and the coroners staff are working to support the council at this busy time. The Department of Culture Media and Sport who oversee treasure have acknowledged this saying *'many aspects of the treasure process are currently paused or delayed'*.

We thank all our finders for their patience and support while we work through this difficult period.

KENT-E181EB - An incomplete cast copper-alloy Iron age bow brooch of continental Knotenfibel type, dating to the period c.100-50 BC.

This kind of iron age brooch is of continental type and known by its German name 'Knotenfibel'. This roughly translates as knot brooch thanks to the attractive way the spring coils round the head of the brooch.

This brooch was one of a small number of finds recorded from images taken when they were first deposited. This was to allow the finder to take the records to the landowner. If we can help in similar ways over the rest of the COVID-19 recovery period let the FLO know.

Object recorded during lockdown by the FLO



Want to Nominate a Find of the Month in future?

Let the FLO know via email FLO@kent.gov.uk or twitter [@Kent_finds](https://twitter.com/Kent_finds)



PUBLIC-B71025 - A copper-alloy commemorative jetton or medal celebrating the five year anniversary of the coronation of Louis XIII of France at Rheims, dated '1615'. Issued at Nuremburg by the master Wolf Lauffer II (1612-1651). Neumann (1868) no. 32370.

This jetton is unusual, being rather better executed and more elaborate than the more common rose and orb types of the period. It dates from a period where jettons were being phased out as tools of finance and becoming more commonly associated as gambling chips or commemorative pieces.

Recorded by self recorder, updated and published by the FLO during lockdown.

What has the FLO been up to?

During the lockdown, the FLO has been working to improve older records on the database, with new images and updated IDs in accordance to new discoveries and standards. So don't be surprised if you spot an old record which has new information on it. If you have an old find you'd like us to take another look at now is a great time so do not hesitate to let the FLO know.

We have also been working to get all the records by our fantastic self-recorders published. This is a long task as we have so many in Kent compared other counties, the FLO and the intern working flat out to get these sorted during lockdown.

As we've already said we are still sorting treasure reports and getting them off to the various curators and museums who need to check or express interest.

Lastly we are still getting finds recorded. Particularly flatter objects such as coins which are suitable for quick images, you'll find Emma's guide later on this issue which is a great guide if you'd like to submit finds this way.

What's next?

So with the backlog from lockdown to sort out you might be wondering how the FLO will get to see finders and return objects. Well over the next couple of weeks we are implementing plans to get the backlog recorded. We will have finds kept in a safe closer to the FLO's home (with prior permission) and begin having finds return days by appointment in Maidstone once a week until September.

During September we will begin restarting finds surgeries but with an appointments system. This will allow us to social distance and reduce waiting around. For this to work well we'd appreciate it if finders could come with their findspots written down (contact the FLO if you'd like a guide on this)

In regards club visits a number of clubs are owed visits and we will do our best to restart to cover these from September. Due to the fact we now have 14 metal detecting clubs it is becoming difficult to cover all clubs and finds surgeries. We are thus currently reviewing how we can best work with everyone and make sure everyone is catered for.



KENT-3CF286 - An iron and gunpowder hand grenade or 'firebomb' dating to the 18th or 19th century, probably Napoleonic.

This type of hand grenade was most common during the Napoleonic Wars and were utilised during both land and naval combat. Examples with the fuse intact were recovered from the HMS Pomone and by Wessex Archaeology during the Portsmouth Harbour's dredge project.

Most ordnance you may come across while detecting will be more recent and often pose significant danger to life and limb. So do not handle. Should you come across unexploded ordnance ring the police and DO NOT handle.

Recorded by the FLO during lockdown.

Want to keep up with the FLO or contact them?

You can always catch up with the FLO on:

Email - FLO@Kent.gov.uk

Contact No. - 03000 410053

Twitter - [@Kent_finds](https://twitter.com/Kent_finds).

Blog - <https://finds.org.uk/counties/Kent>.

Quick Guides:

Photographing finds for the FLO

By Emma Pierce -

Self-recorder Emma Pierce talks photographing finds in this useful guide, perfect for when you need to send pictures to the FLO!

Begin by setting up the area in which you will photograph your finds. Make sure you have a flat surface that you can set up your equipment on. I use my dining table which is in the conservatory and it's full of natural light, so I don't need additional lighting. If you need to set up additional lighting, adjustable lamps with white bulbs can be great for this - place your lamp above and slightly to the side of your find - be careful to not cause harsh shadows. If you have harsh shadows, move the lamp away slightly. Placing a lamp on top of some books can be an easy way to move the light away from the find.

Place your find on top of your white background and next to your scale, then you are nearly ready to begin.



Things you will need:

- A camera (smartphone/compact/DSLR)
- A Scale (can be printed or use rulers)
- A clear white background (I'm using A4 printer paper)
- A light, or a naturally well-lit area
- A tripod or a very steady hand
- Your finds!



Smartphone cameras and compact cameras can either be handheld or placed onto a tripod. Photos need to be clear and not blurry so that the FLO can work out all of the important details from your find.

When using a smartphone or compact camera, place your camera directly above your object and ensure the phone is parallel to your table. Make sure your object is completely in focus by tapping the object on your screen, or by half pressing the button on your compact camera until you either hear a beep to tell you it's in focus, or a green focus square appears on your screen.

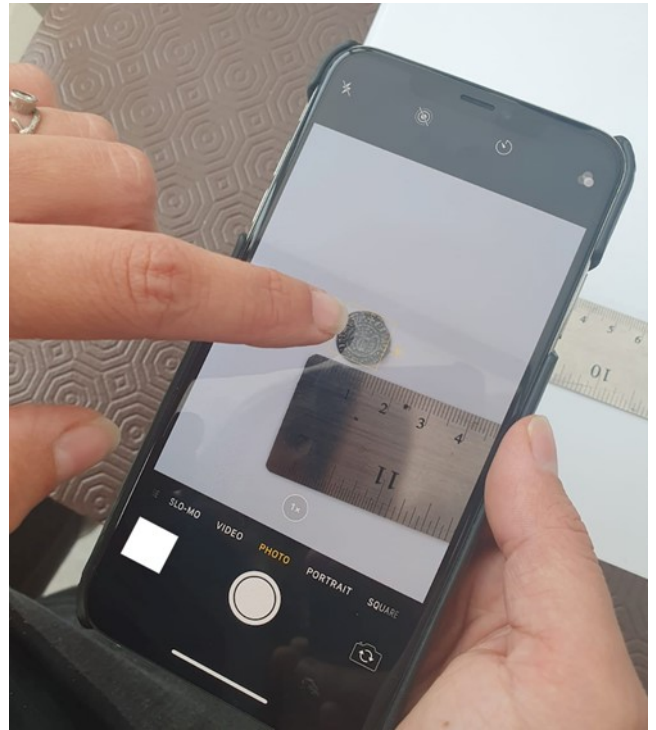
Do not use the zoom function on your device, if you need to move closer/away from your object, do this manually.

Make sure you can see both your object and your scale - then you can take the photo.

You could set up a timer, so the camera will take the photo for you while you hold it or while it is on the tripod.

Take a couple of photos of each side of your object, each time try to keep the camera at the same height distance from your find. By taking a couple of photos, you can review them at the end for your best, in focus, shot.

If you are using a DSLR camera, a tripod is highly recommended as these cameras can be heavy to hold and you don't want shaky, blurry photos!



DSLRs can be large and bulky, so make sure your tripod is strong and sturdy enough to hold it directly above your object – not to the side, not at an angle, directly above your object and scale.

If you have your DSLR and tripod set up be careful where you set up a light, as you do not want any accidental shadows being cast across your find.

Again, do not use the zoom function on your device, make sure you move the camera manually and then re-check your object is in focus. Once you are ready, take your photos.

Take a couple of each side of your object – all from the same distance. You can then review your photos before you send them to the FLO, to make sure you are sending your best, in focus, photos.

Now you have your photos you just need to send them to the FLO, email: FLO@kent.gov.uk. During the lockdown and recovery period we are recording some finds (coins and other flat objects) via email, so do include the findspot and measurements (diameter or width/length and weight) to one decimal place!